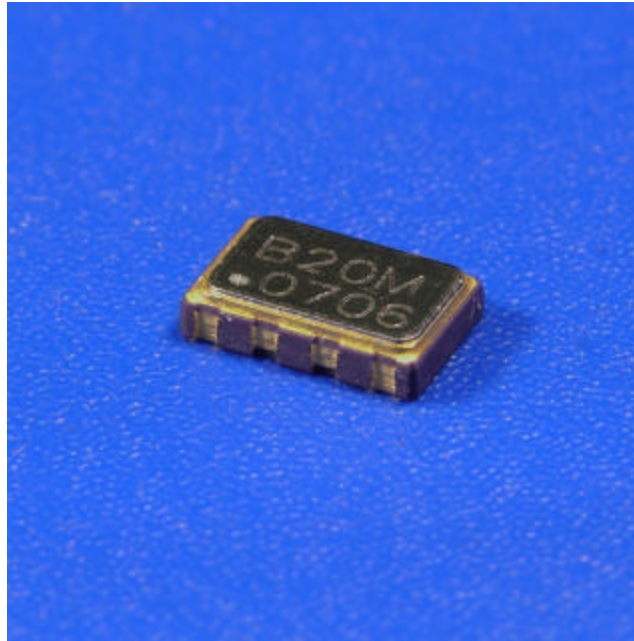


Description:

The TV105A Temperature Compensated Voltage Controllable Crystal Oscillator (TCVCXO) Series products provide a wide range of options in temperature stability, operating frequency range, and electronic frequency adjustment in a miniature 3 x 5 mm ceramic SMD package.



Features:

- Available in frequencies from 10 to 40 MHz with 13 MHz, 14.4 MHz, 20 MHz, and other frequencies as standards
- +/- 5 to +/- 20 ppm pull range
- Clipped Sine Wave output
- Standard 3 x 5 mm ceramic SMD package
- RoHS-6 Lead-free compliant

Frequency Range, Operating Temperature, and Frequency Stability:

Frequency Range	Operating Temperature	Product Code	Frequency Stability	Product Code
10 to 26 MHz 3.3 and 5 volt 26 to 40 MHz 3.3 volt only	-20 to +70° C	C	+/- 0.5 ppm	A
	-40 to +85° C	D	+/- 1.0 ppm	B
	0 to +55° C	E	+/- 1.5 ppm	C
	-10 to +60° C	F	+/- 2.0 ppm	D
	-30 to +85° C	G	+/- 2.5 ppm	E

**For different frequency stabilities and other temperature ranges, consult Bliley Sales
+/- 0.5 ppm available only with option C,E,F for operating temp. range.

Aging: (typical at 10 MHz after 30 days continuous operation)

Frequency	Timeframe	Aging	Product Code
10 MHz	1st Year	+/- 1.0 ppm	N/A

Phase Noise:

Frequency	Offset	Phase Noise (Typ.)	Product Code
10.0 MHz	1 Hz	- 60 dBc/Hz	N/A
	10 Hz	- 85 dBc/Hz	
	100 Hz	-115 dBc/Hz	
	1 KHz	-135 dBc/Hz	
	10 KHz	-148 dBc/Hz	
	100 KHz	-150 dBc/Hz	

Supply Voltage (Vs):

Power Supply (Vs)	+3.3 Vdc +/-10%	+5.0 Vdc +/-10%
Product Code	C	D

Current Consumption:

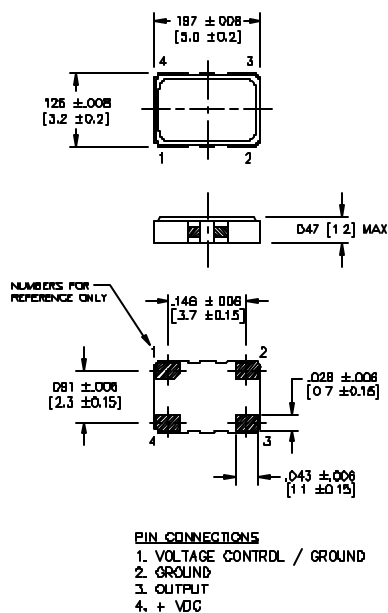
Clipped Sine Wave	
Supply Current	2.5 mA

Environmental:

Storage Temperature	-55 to +125° C
---------------------	----------------

Output Waveform:

Clipped Sine Wave	
Product Code	N/A
Output Level	0.8 V p-p min.
Load	10K // 10 pF

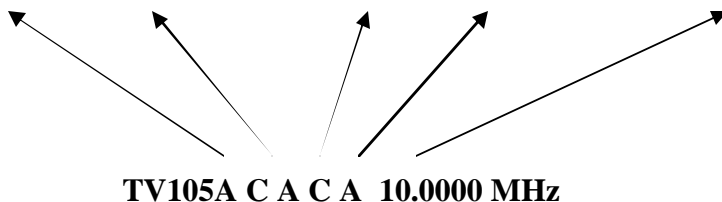

Pulling Range:

Tuning Range	None(TCXO)	+/-5 ppm	+/-8 ppm	+/-10 ppm	+/-12 ppm	+/-15 ppm	+/-20 ppm
Product Code	T (Pin 1 – Ground)	A	B	C	D	E	F

**Note: Maximum pull available dependent upon required temperature stability

Ordering Options:

Operating Temperature	Frequency Stability	Supply Voltage	Pulling Range	Operating Frequency
C	A	C	T	xx.xxxx MHz
D	B	D	A	xx.xxxx MHz
E	C		B	xx.xxxx MHz
F	D		C	xx.xxxx MHz
G	E		D	xx.xxxx MHz
			E	xx.xxxx MHz
			F	xx.xxxx MHz


Product Selection Code (refer to the above example):

This part is RoHs compliant, -20 to +70C, +/- 0.50pm, 3.3 volt clipped sine wave with +/- 5 ppm pull, 10MHz operating frequency.

**** Not all combinations available in this product**