

5.0 mm x 3.2 mm VCXO V105A series

Description:

The V105A Voltage-Controlled Crystal Oscillator (VCXO) Series products are used in phase locked loops, ADSL, and Cable modem applications offering high performance in a miniature footprint (5.0 x 3.2 mm)..



Features:

- Available in frequencies from 1.000 MHz to 54 MHz
- Tri-state Enable/Disable
- Hermetically sealed ceramic SMD package
- TTL/HCMOS compatible
- RoHS-6/Leadfree compliant

Frequency Range

Frequency
1 to 54 MHz

Operating Temperature:

Operating Temperature	Product Code
-10 to +60C	A
0 to +70C	B
-20 to 70C	C
-40 to 85C	D

Frequency Stability:

Freq. Stability	Product Code
+/- 15 ppm	A
+/- 25 ppm	B
+/- 50 ppm	C
+/-100ppm	D

Frequency stability only refers to frequency drift over temperature.
 Frequency tolerance at 25C will be +/- 15 ppm max. at midrange control voltage.
 Frequency versus +/- 10% power supply variation will be: +/- 5 ppm max.
 Frequency versus +/- 10% load variation will be +/- 3 ppm max.
 Not all combinations of stability and temperature ranges available.

Aging: (typical at 27 MHz after 30 days continuous operation)

Frequency	Timeframe	Aging	Product Code
27 MHz	1st Year	+/- 5.0ppm	N/A

Supply Voltage (Vs):

Power Supply (Vs)	3.3 Vdc +/-10%	5.0 Vdc +/-10%
Product Code	C	D

Frequency Versus Voltage:

3.3 volt		5.0 volt	
0 to 3.3v on Pin 1	Product Code	0.5v to 4.5v on Pin1	Product Code
+/- 50 ppm typ	A	+/- 50 ppm typ	D
+/- 100 ppm typ	B	+/- 100 ppm typ	E
+/- 150 ppm typ	C	+/- 200 ppm typ	F

Current Consumption (I_{DD}): 30 mA max.

Environmental:

Storage Temperature	-55 to +125 °C
---------------------	----------------

Output Waveform:

		Min	Typical	Max
Output Symmetry	At 50% V _{DD}	45%	50%	55%
Rise Time (nS)	Tr	3	5	10
Fall Time (nS)	Tf	3	5	10
Output Voltage	V _{OH}	90% V _{DD}		
Output Voltage	V _{OL}			10% V _{DD}
HCMOS load (pF)		13.5	15.0	16.5

Start-up Time: 10 mS max.

Tri-state function Pin 1:

Pin 1 = logic high or open ; Output active at Pin 3

Pin 1 = logic low ; high impedance at pin 3 Output disabled

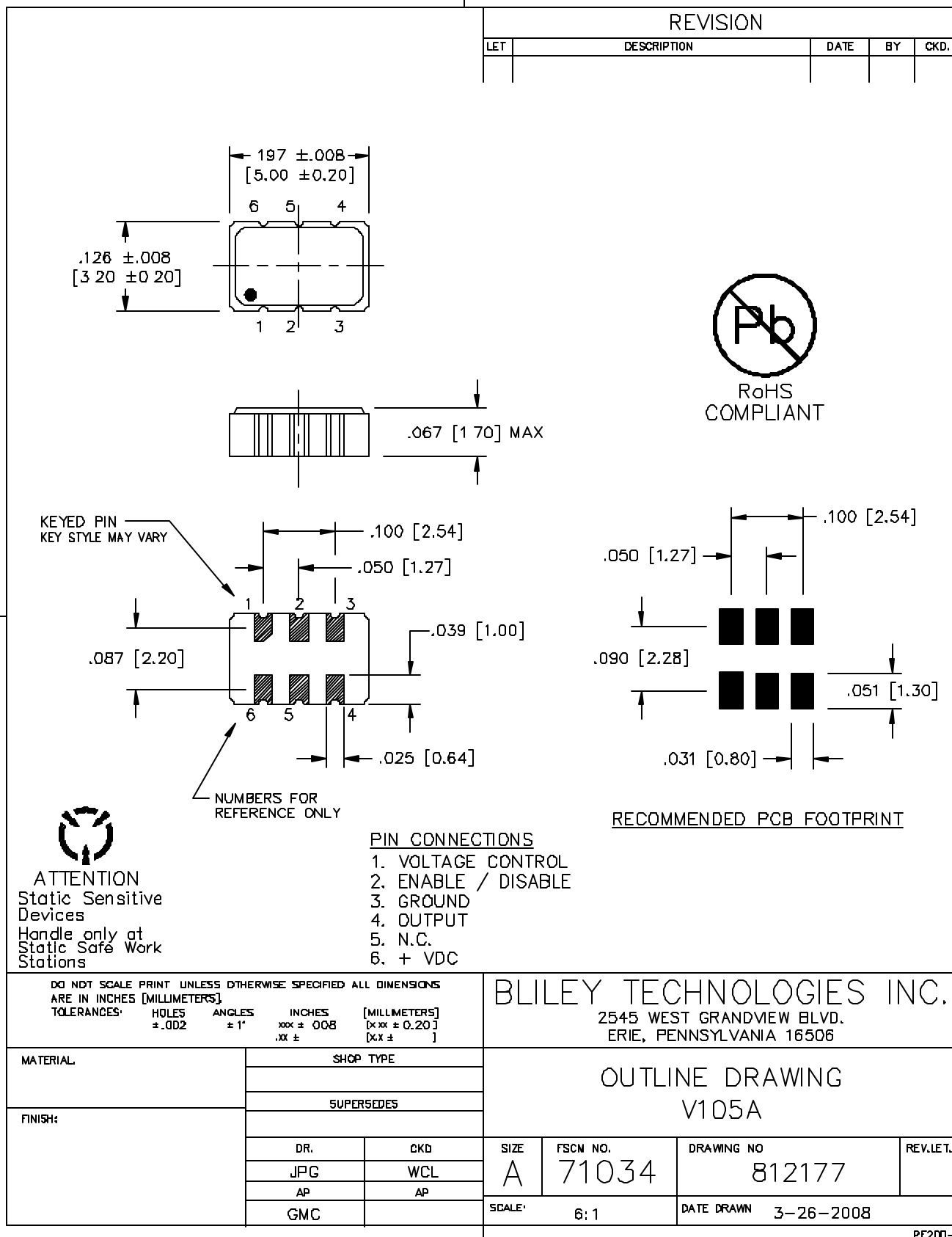
Ordering Options:

Product Family	Operating Temperature	Frequency Stability	Supply Voltage	Frequency versus Voltage	Operating Frequency
V105A	A	A	C	A	XX.XXXX MHz
V105A	B	B	D	B	XX.XXXX MHz
V105A	C	C		C	XX.XXXX MHz
V105A	D	D		D	XX.XXXX MHz
V105A				E	XX.XXXX MHz
V105A				F	XX.XXXX MHz

V105A C A C A 10.0000MHz
Part Number Build Example

****Consult Bliley sales if other options required**

RoHs compliant; -20 to 70C; +/- 15 ppm with a 3.3 volt supply; +/- 50 ppm pull with 1.65v +/- 1.65v on Vcontrol; 10 MHz nominal operating frequency.



ATTENTION
Static Sensitive Devices
Handle only at Static Safe Work Stations

PIN CONNECTIONS

1. VOLTAGE CONTROL
2. ENABLE / DISABLE
3. GROUND
4. OUTPUT
5. N.C.
6. + VDC

DO NOT SCALE PRINT UNLESS OTHERWISE SPECIFIED ALL DIMENSIONS ARE IN INCHES [MILLIMETERS]
 TOLERANCES: HOLES ±.002 ANGLES ± 1° INCHES .xxx ± .008 [xxx ± 0.20] [MILLIMETERS] [xx ± .20] [xx ± .]

BLILEY TECHNOLOGIES INC.
 2545 WEST GRANDVIEW BLVD.
 ERIE, PENNSYLVANIA 16506

MATERIAL:	SHOP TYPE	
FINISH:	SUPERSEDES	
	DR.	CKD
	JPG	WCL
	AP	AP
	GMC	

<p>OUTLINE DRAWING V105A</p>			
SIZE	FSCN NO.	DRAWING NO	REV. LET.
A	71034	812177	
SCALE: 6:1		DATE DRAWN 3-26-2008	

PE200-1

How to Order This Product:

Contact Bliley Technologies with Product Selection Code from Ordering Options Section above.

Attn:

Sales @ Bliley

Fax: **814-833-2712**

Phone: 814-838-3571

Email: info@bliley.com

Web: www.bliley.com

Date: _____

From:

Name: _____ Company: _____

Fax: _____ Phone: _____

Email: _____

Quantities to Quote: _____ Target Price: \$_____

Application / Reference #: _____